

INSTALLATION GUIDE

1. Minimum Requirements.....	1
2. Software Installation	1
3. Web Publication.....	6

1. MINIMUM REQUIREMENTS

- Windows 2000 Server SP 2 or higher
- Internet Information Server.
- A SQL Server 2000 or MSDE is required to support this software.
- Internet Explorer 6.0.
- Net Framework.
- Public fixed IP.

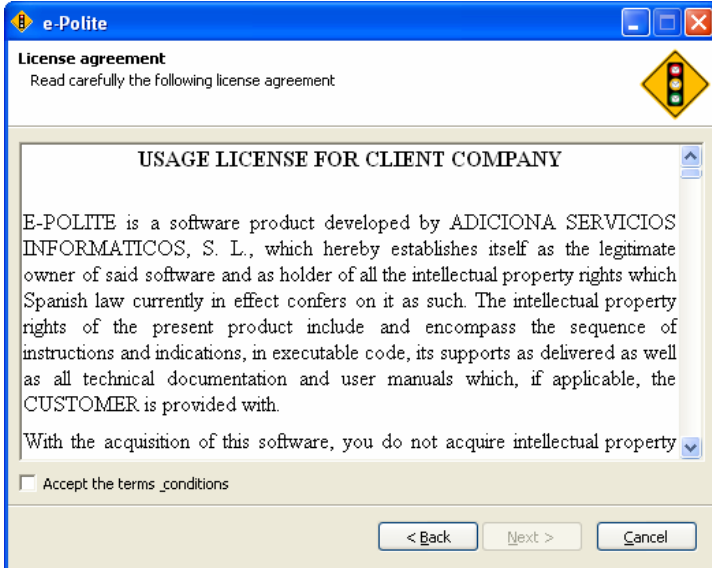
Dedicated Server: do not install the SMTP service Server during the installation of IIS (Internet Information Service).

Shared Server: to install the e-Polite onto an existing e-mail Server you have to change the send port of this Server to a port different than 25 and then configure the “listener” of e-Polite for that specific send port. The E-polite programme can not be installed in the same server where an Exchange 2000 or higher server is installed.

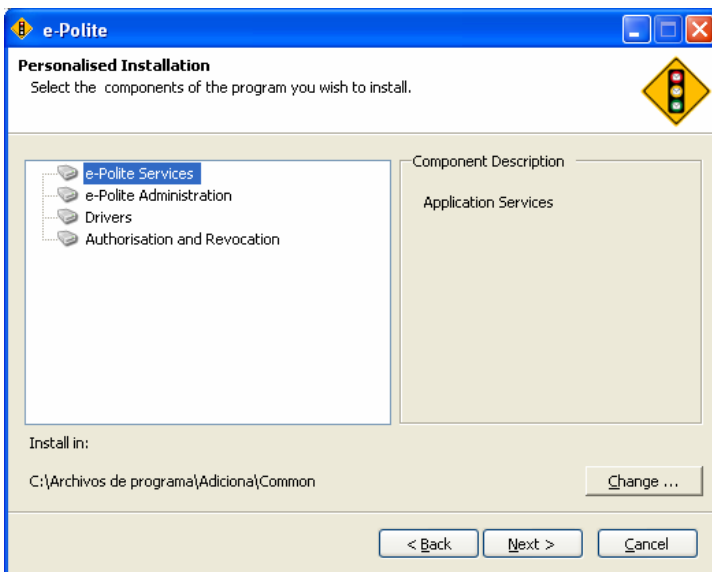
2. SOFTWARE INSTALLATION

Insert the CD and start the installation of e-Polite. A dialog box will automatically pop up:

Follow the steps for configuration by clicking on “Next”.

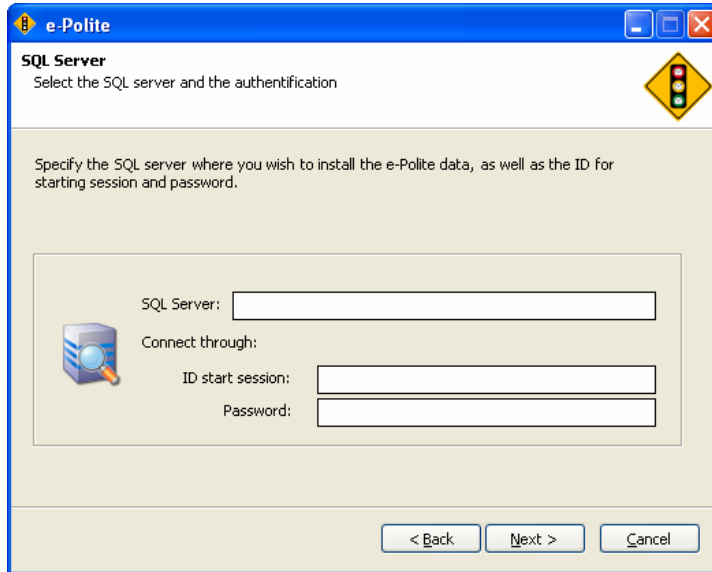


Read the licence contract very carefully and if you agree click on "I agree". Then click on "Accept" and click on "Next".



Choose the destination folder for each component of the software.

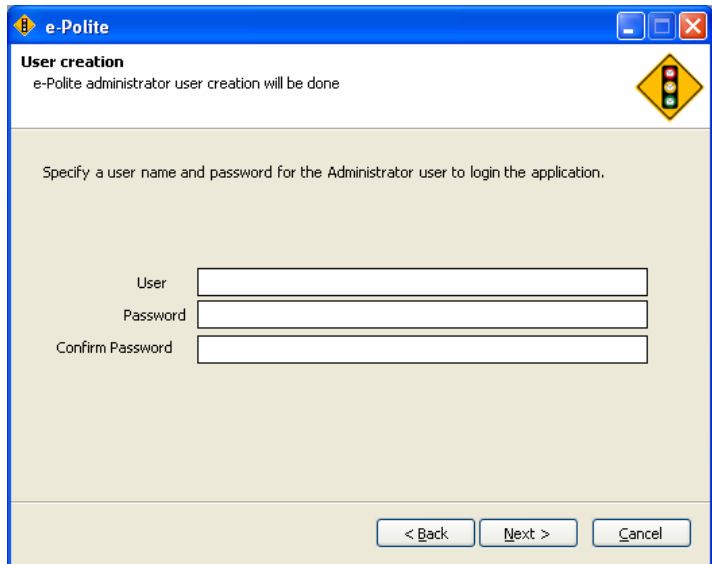
"Authorization and Revocation" folder contains all the files that will be published by means of IIS. Take this in account at the moment of choosing the destination folder.



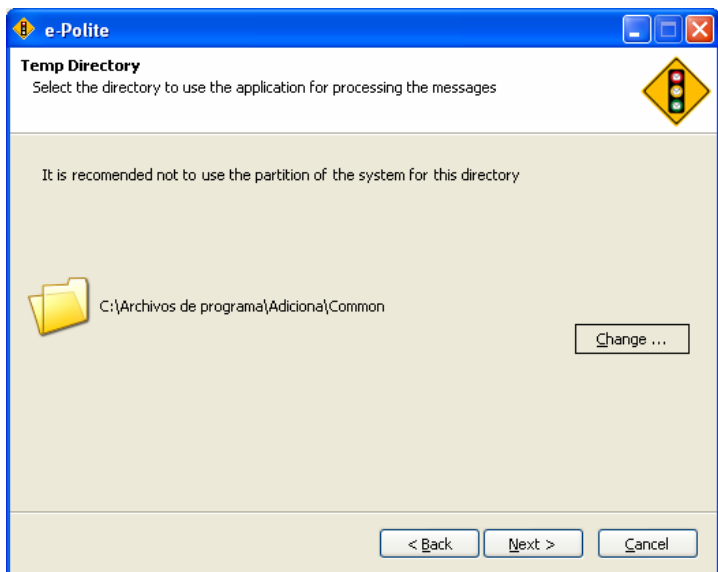
Select the SQL Server where the database will be installed.

SQL does not need to be placed in the same Server as the software.

You have to enter the SQL Server password or a username and password suitable for creating a database into the SQL server.

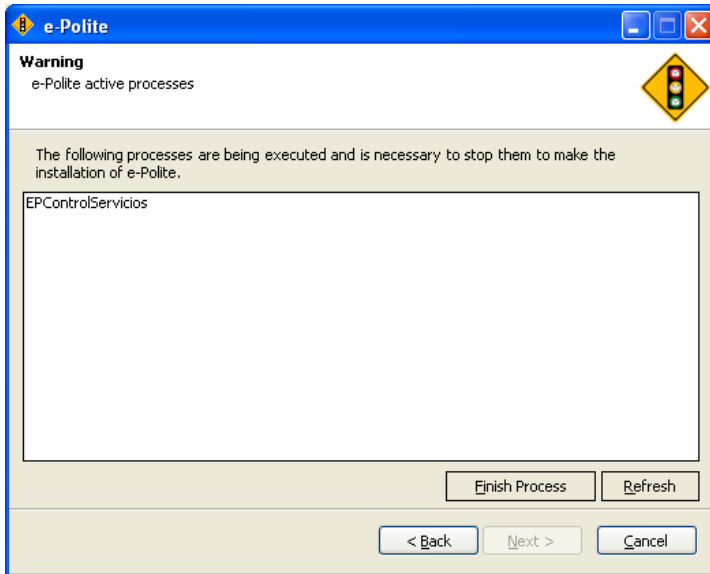


You have to create a username and password for the administrator of the software.



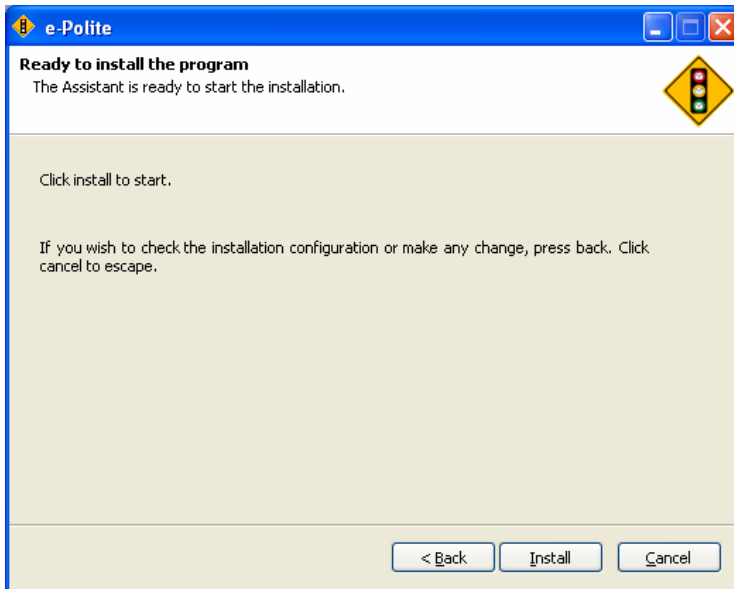
Choose the destination folder that will temporarily be used by the software to save all messages in process.

This folder can reach critical storage levels because of massive e mail sending. For this reason we suggest you not to choose the server partition.

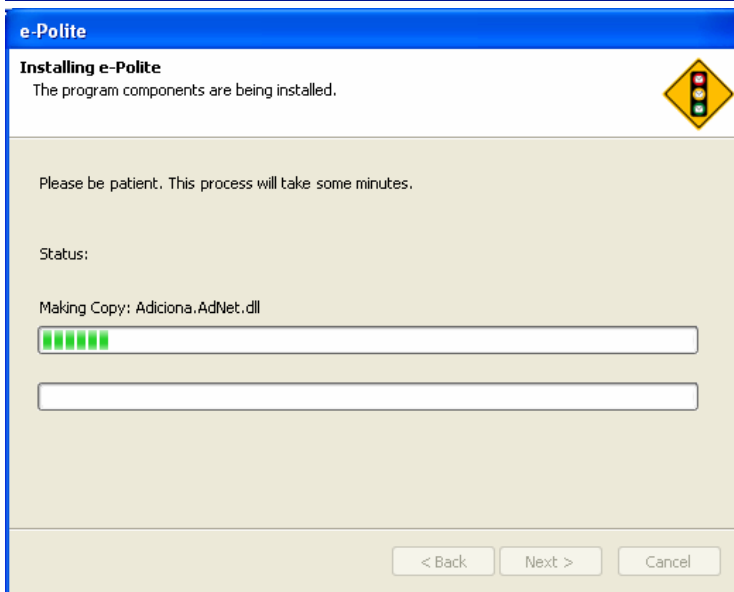


Some services or processes running may interfere with the installation of e-polite and may need to be stopped.

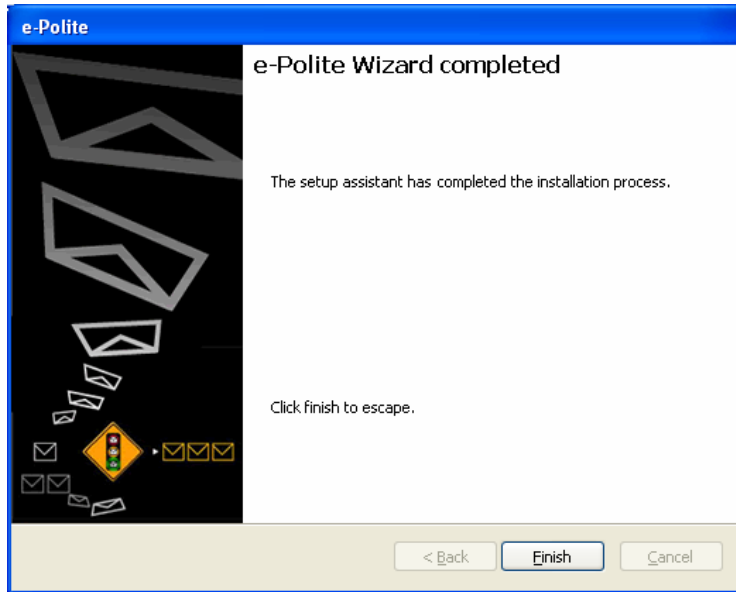
Select them one by one and stop the process.



Click on "Install" in order to start the installation.



You may have to wait a few minutes during the installation process.



Click on "Finish" in order to exit the e-Polite setup Wizard.

3. WEB PUBLICATION

This software requires the publication of 2 websites:

- Administrator website.
- The automatic service of “Authorization and Revocation” website.

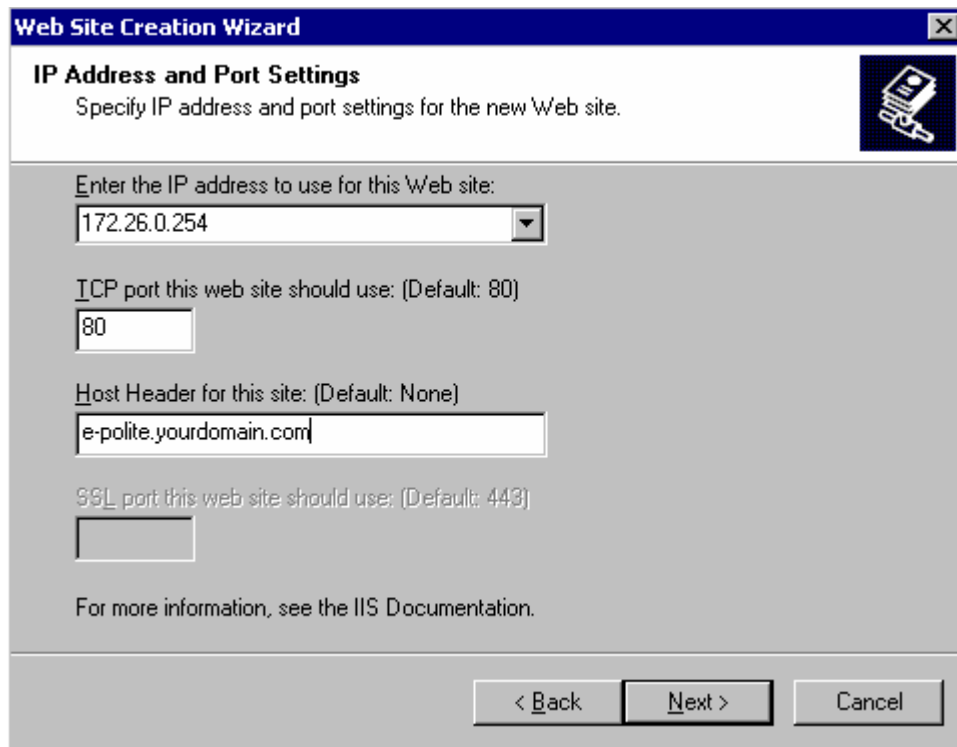
These sites can only be published from the “Internet Service Administrator” account.

How to publish from a new website the automatic “Authorization and Revocation” services

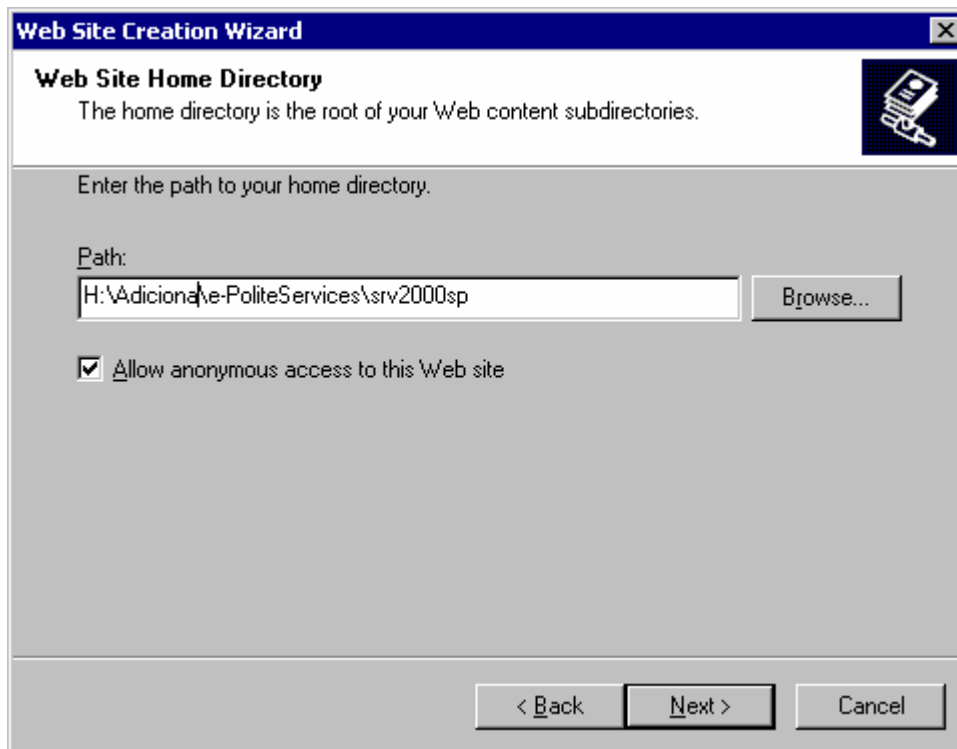
1. From the contextual menu select New/ Website
2. Enter the name of this site



3. Determine the IP address, the publication port and the header (if necessary) of the website.
(We need this information in order to configure the software)



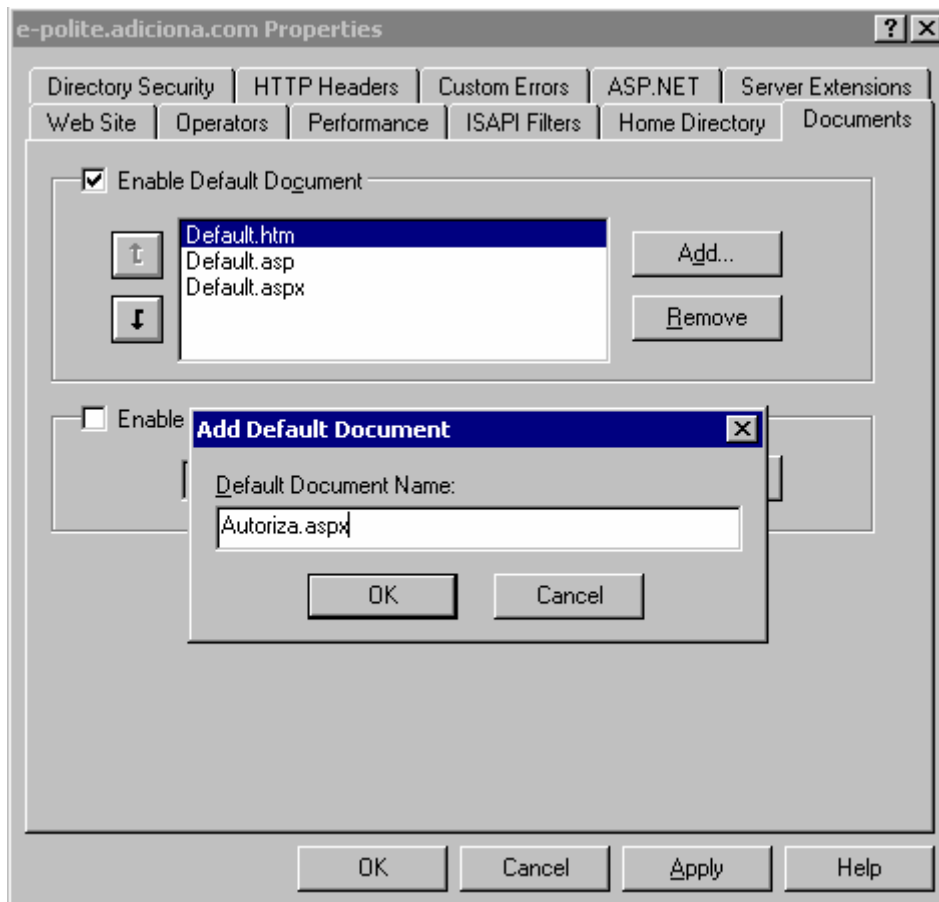
4. Select the folder where automatic "Authorization and Revocation" services were installed (by default: c:\Program Files\Adiciona\e-politeServices).



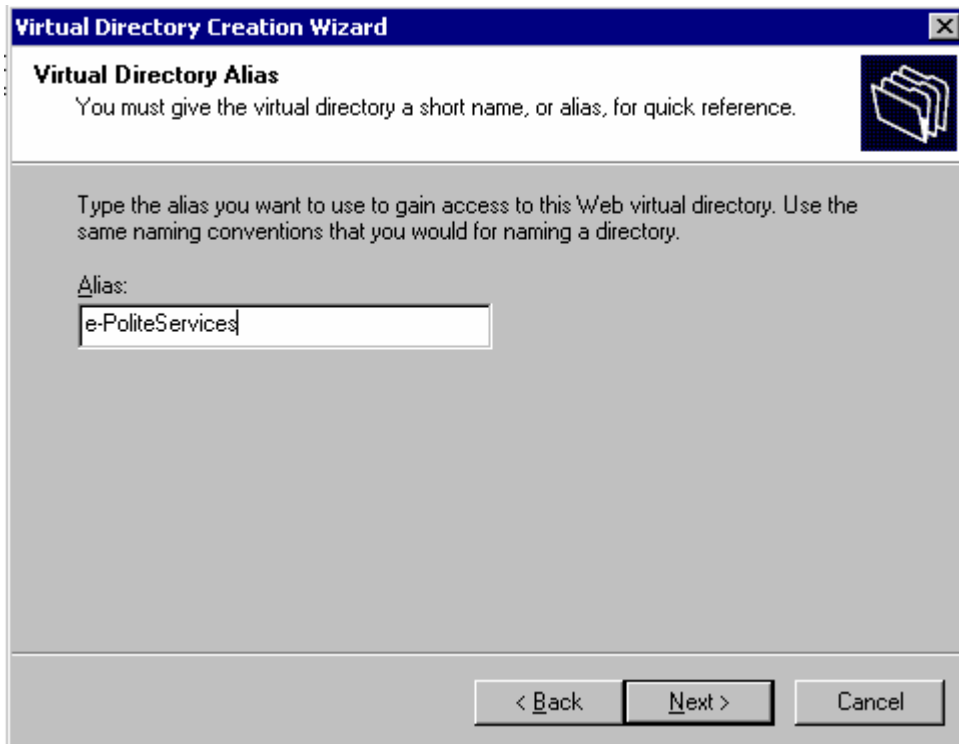
5. Give read and execute permission for scripts.



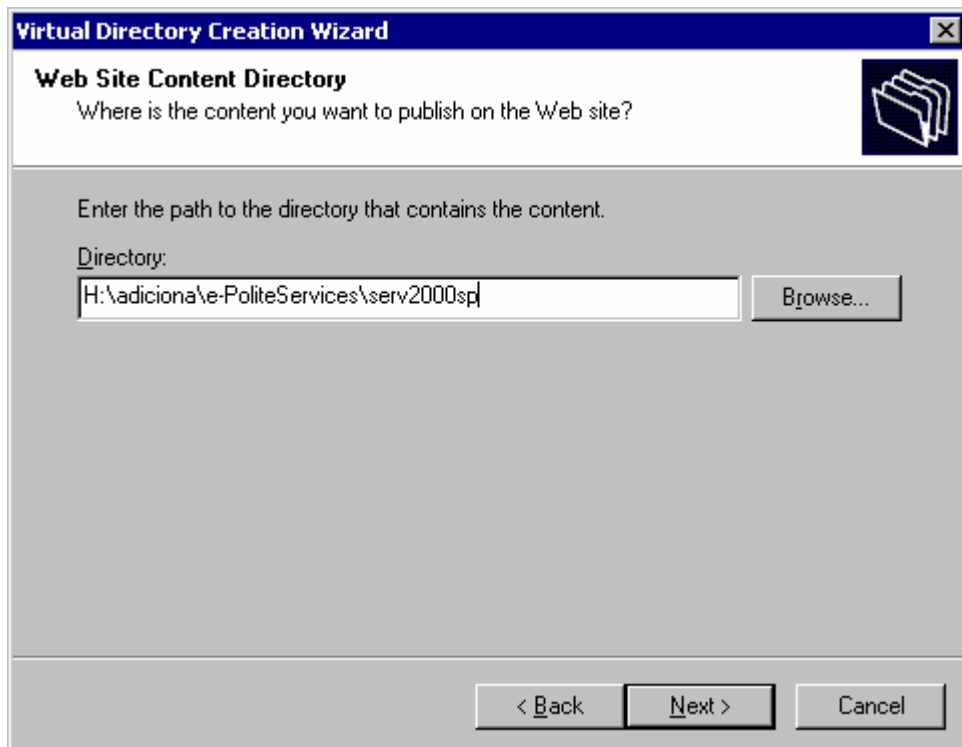
6. Add "authorize.aspx" as default document of the website, and put it at the beginning of the list.



- In order to publish the automatic revocation service you have to publish the root of the website (for example. e-Polite.subdomain.com) as a virtual folder .The virtual site must be called **e-PoliteServices**.



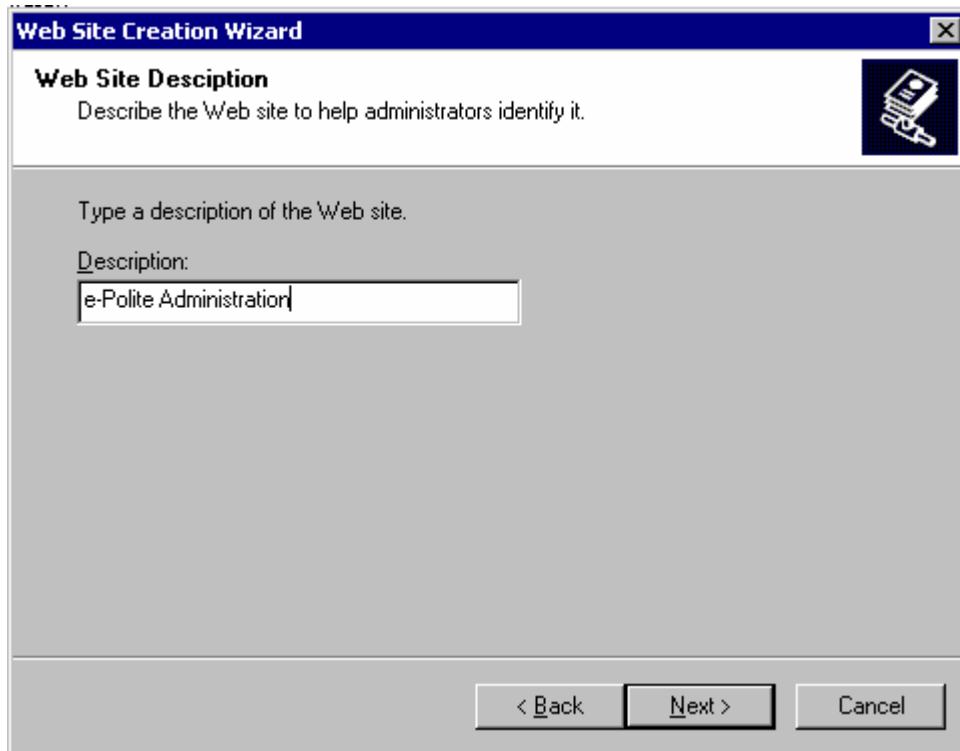
- Select the root of the website.



- Give read and execute permission for scripts.

How to publish the e-Polite administration from a new website:

1. Select New/Website from the contextual menu
2. Enter the name of the website:



- Determine the IP address, the publication port and the header (if necessary) of the website. If the IP address is the same for both websites we need to use different ports.

Web Site Creation Wizard

IP Address and Port Settings
Specify IP address and port settings for the new Web site.

Enter the IP address to use for this Web site:

HTTP port this web site should use: (Default: 80)

Host Header for this site: (Default: None)

SSL port this web site should use: (Default: 443)

For more information, see the IIS Documentation.

< Back Next > Cancel

- Select the folder where the e-Polite administration was installed.

Web Site Creation Wizard

Web Site Home Directory
The home directory is the root of your Web content subdirectories.

Enter the path to your home directory.

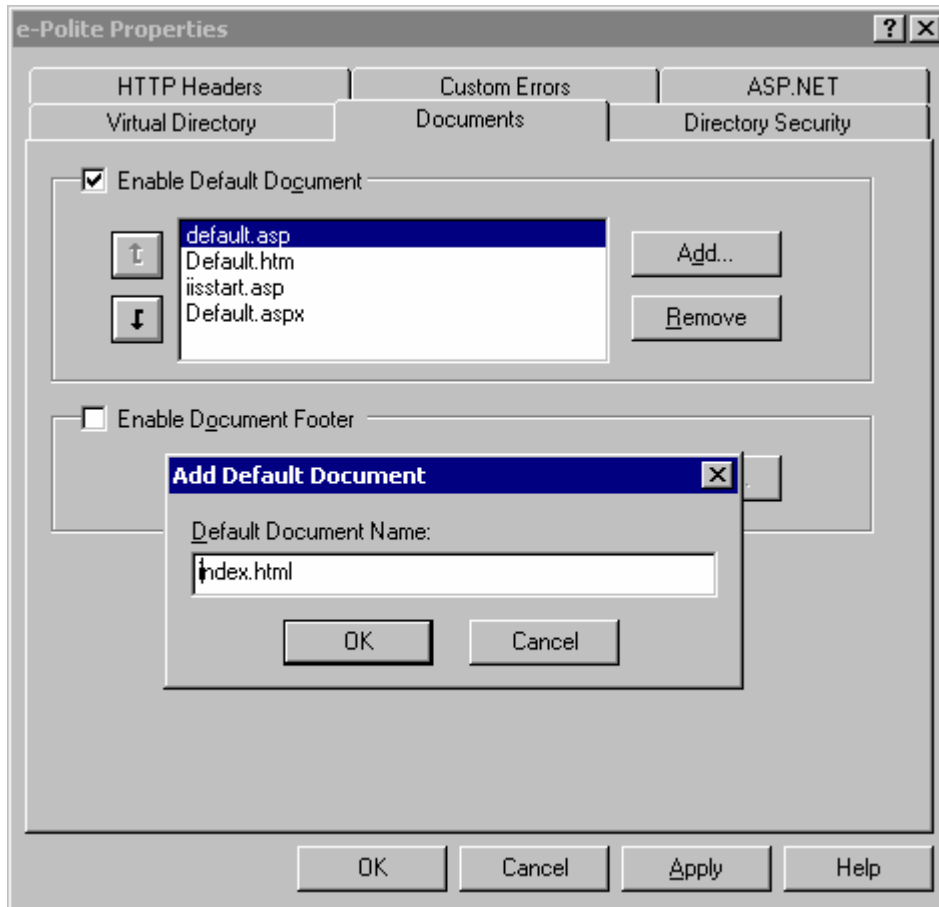
Path:
 Browse...

Allow anonymous access to this Web site

< Back Next > Cancel

We recommend not permitting the anonymous access to the administration website.

5. Give read and execute permission for scripts.
6. Add "index.html" as default document of the website, and put it at the beginning of the list.



7. Find the link "e-Polite" into the folder where the e-Polite administration was installed and change the path by entering the new address.
For example: <http://ep-admin.yourdomain.com>
8. When installing e-Polite a new folder called TMP is created wherein we must give written permission to the IUSR_SERVERNAME and IWAM_SERVERNAME users. To assign these permits go to the e-Polite installation folder and right click the on the TMP folder. Add said users to security tab clicking on the add button. Once these two users have been added we need to give them permission to modify.

Please don't boot the e-polite services before configure the application.

Please check the "Configuration Manual" to configure **e-polite®**